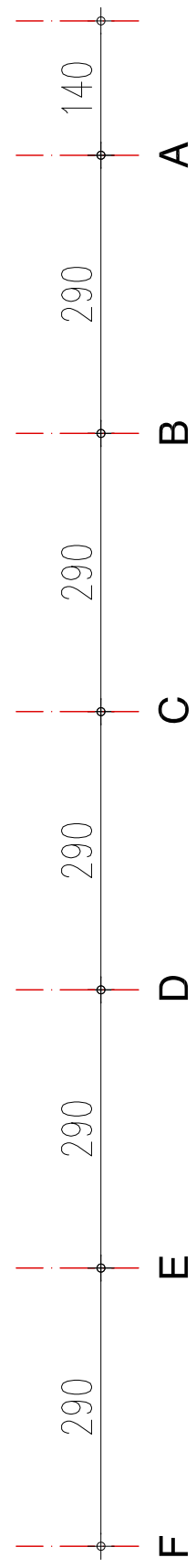
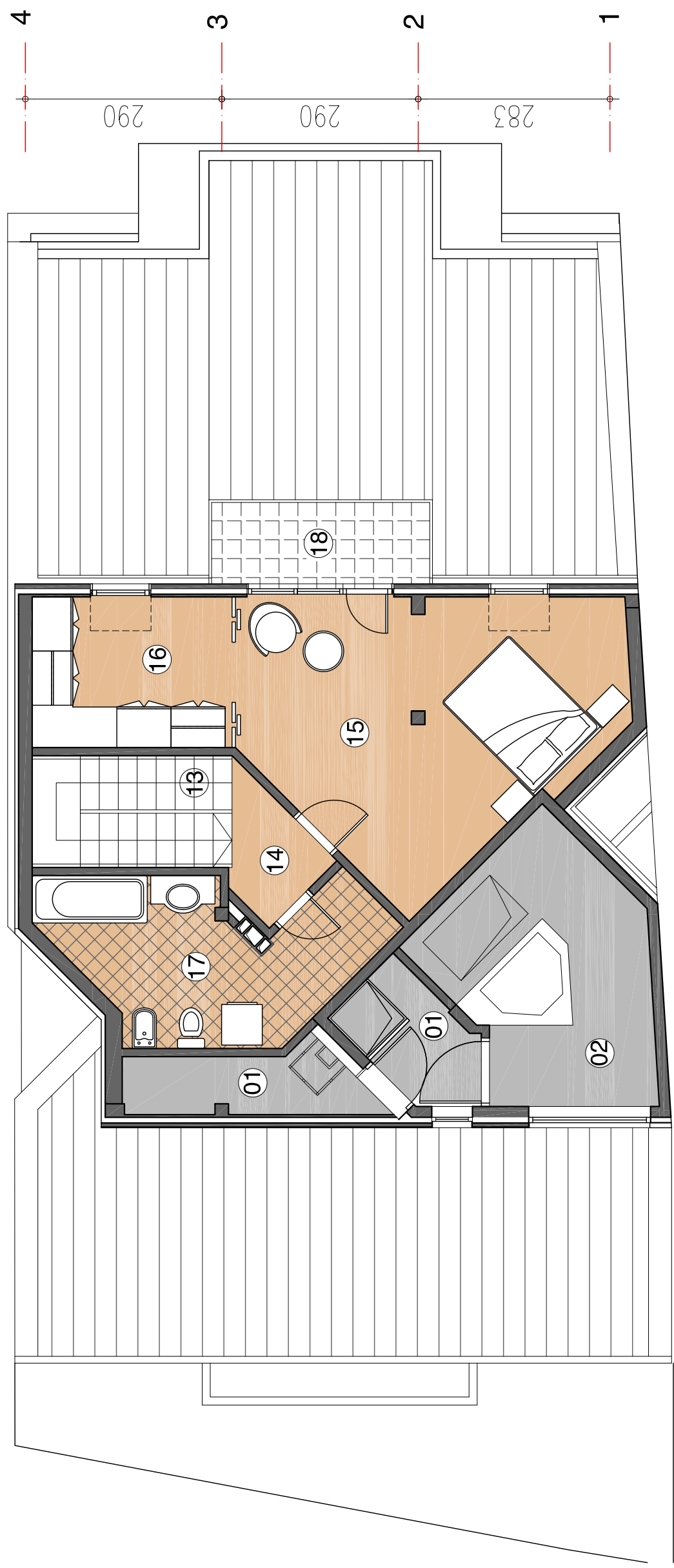


STAMBENO-POSLOVNI OBJEKAT  
**MUTAPOVA 20**



**STAN A**

BR.	NAMENA PROSTORIJE	POVRŠINA	BR.	NAMENA PROSTORIJE	POVRŠINA
13	STEPENICE	4.87	17	KUPATILO	9.48
14	DEGAŽMAN	2.20	18	LOĐA	3.97
15	SPAVAČA SOBA	19.76			
16	GARDEROBA	6.57			

POVRŠINA GALERIJE	46.85 m <sup>2</sup>
<b>UKUPNA POVRŠINA STANA</b>	<b>159.75 m<sup>2</sup></b>